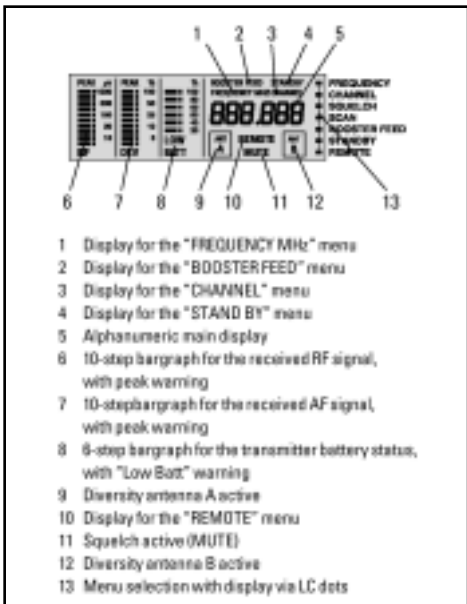
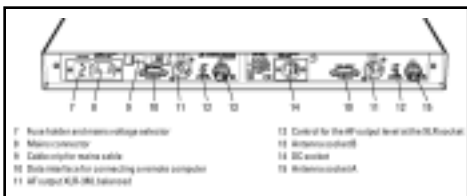




Dimensions of the 3532



Reading off the LC display



EM 3532 Back Panel

EM 3532 2-Channel RF Wireless Receiver

The EM 3532-U consists of two complete true diversity receivers with tunable receiving frequencies in the UHF band. Due to its high level of operational reliability, menu-assisted operation and flexibility, this receiver is especially suitable for demanding theatre and broadcast applications.

Features—Benefits

- Two 32-channel true diversity receivers, 19", 1 U
- Integral antenna splitter, 2 x 1 : 2
- Tunable receiving frequencies
- Scan function (transmitter search tuning)
- HiDyn plus noise reduction system
- DC socket
- Suitable for multi-channel applications
- Remote-controllable via PC with S-MCD software

Technical Data

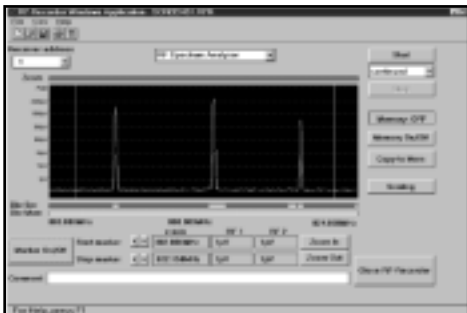
Receiving frequencies	tunable in 5 kHz steps (4,800 frequencies)
Frequency memories	32
Frequency range	450–960 MHz
Switching bandwidth	24 MHz
Modulation	wideband FM
Nominal/peak deviation	± 40 kHz/± 56 kHz
RF squelch	0–100 µV, adjustable
Noise reduction system	"HiDyn plus"
AF frequency response	45–20,000 Hz (–3 dB)
Signal-to-noise ratio	117 dB(A)rms
THD (1 kHz)	≥ 0.3 % (typ. 0.15 %)
RF inputs	2 BNC sockets, 50 Ω
AF output voltage max.	18 dBu, adjustable
Headphone output max.	12 dBu, adjustable
Output impedance	≥ 50 Ω
Power supply	115/230 V AC (+10% /–15 %), 11.3–18 V DC/0.8
Housing	19", 1 U
Dimensions in inches	17.17 x 1.69 x 8.47
Weight approx.	8.81 lbs



Display of a scene configuration with many actors on the S-MCD Mikroport computer display



Display of a scene configuration with four actors on the S-MCD Mikroport computer display



Window "RF recorder", "RF Spectrum Analyzer"



Window "Receiver Configuration"

Supplied Accessories

2 Telescoping chasis-mount antenna S54378

Optional Accessories

Antenna mount	GA 3030 AM
Active directional antenna	A 12 AD UHF
Passive omni-directional antenna	A 1031-U
Ground plane antenna	GZA 1036-9
N/BNC adapter	
Co-axial antenna cable, RG 58	BB1 (1'), BB3 (3'), BB6 (6'), BB25 (25') BB100 (100')
BNC coupler	GZV 1019A
Custom-built active antenna splitter	SAS 108/216/324/432
Mikroport Computer Display	S-MCD 3000-HP
RX/RX connection cable	KX 3500.S-MCD
RX/PC connection cable	(please specify length when ordering)
PCM/CIA Computer interface card	RS 485SIO
Cable for connecting to PC 485 port	KX-PC
Isolated RS-232/485 converter module w/ power supply	ADAM-4520/NT
4 port RS-232/RS 485 card	PCL-746
Dual port RS-232/RS 485 card	PCL
Replacement telescoping antenna	S54378

Sennheiser Electronic Corporation, 1 Enterprise Drive, Old Lyme, CT 06371
 Telephone: 860-434-9190 • Fax: 860-434-1759 • Web: <http://www.sennheiserusa.com>
Sennheiser Mexico: Av. Xola 613, PH6, Col. Del Valle 03100, Mexico, DF. Telephone: (525) 639-0956. Fax: (525) 639-9482
Sennheiser Canada: 221 Labrosse Ave, Pte-Claire, PQ H9R 1A3. Telephone: 514-426-3013. Fax: 514-426-3953
 Manufacturing Plant: Am Labor 1, 30900 Wedemark, Germany